

NETWORK LIGHTING CONTROL

- BG1** - NBRG 8 KIT nLIGHT BRIDGE, 8 RELAYS, KIT
- DP** - NPP16 D EFP POWER/RELAY PACK, DIMMING, EXTERNAL FAULT PROTECTION
- DP1** - NPP16 D EFP SA POWER/RELAY PACK, DIMMING, EXTERNAL FAULT PROTECTION, VACANCY (DEFAULT) OR AUTO-ON
- CD** - NCM PDT 9 AR RJB LOW VOLTAGE CEILING MOUNT SENSOR, PASSIVE DUAL TECHNOLOGY, SMALL MOTION / STANDARD RANGE 360° LENS, AUXILIARY RELAY, REAR RJ-45 PORTS
- CS** - NCM PDT 10 AR RJB LOW VOLTAGE CEILING MOUNT SENSOR, PASSIVE DUAL TECHNOLOGY, LARGE MOTION / EXTENDED RANGE 360° LENS, AUXILIARY RELAY, REAR RJ-45 PORTS
- PC1** - NCM ADCX RJB LOW VOLTAGE CEILING MOUNT SENSOR, PHOTOCONTROL W/ AUTO DIMMING; 0-10V OUTPUT PROVIDED BY OTHER DEVICE(S), REAR RJ-45 PORTS
- PD1** - NCM PDT 9 ADCX AR RJB LOW VOLTAGE CEILING MOUNT SENSOR, PASSIVE DUAL TECHNOLOGY, SMALL MOTION / STANDARD RANGE 360° LENS, PHOTOCONTROL W/ AUTO DIMMING; 0-10V OUTPUT PROVIDED BY OTHER DEVICE(S), AUXILIARY RELAY, REAR RJ-45 PORTS
- S** - SPODMRA MWO WH AESTHETIC DIMMING SWITCH-POD, MULTI-WAY OPTION
- SC1** - NECY HVOLT BAC REMR ENC GFKX nLIGHT ECLYPSE, 120-277 VAC, BAGNET, 14 1/4"H X 14 1/4"W X 4"D METAL ENCLOSURE FOR ECLYPSE ENERGYSYTE OR nLIGHT ECLYPSE. NGWY2 GFX AND PS 150 POWER SUPPLY WITH CAT5 CABLE
- SD** - NPODMA DX WH nLIGHT WIRED AESTHETIC WALLPOD, RAISE/LOWER DIMMING
- SD2** - NPODMA 2P DX WH nLIGHT WIRED AESTHETIC WALLPOD, 2-POLE, RAISE/LOWER DIMMING
- SD4** - NPODMA 4P DX WH nLIGHT WIRED AESTHETIC WALLPOD, 4-POLE, RAISE/LOWER DIMMING
- SLV** - NPODMA WH nLIGHT WIRED AESTHETIC WALLPOD
- SD1** - WSXA PDT WH WALL SWITCH SENSOR, PASSIVE DUAL TECHNOLOGY
- SOS** - WSXA PDT WH WALL SWITCH SENSOR, PASSIVE DUAL TECHNOLOGY
- SISO** - WSXA MWO PDT D SA WH WALL SWITCH SENSOR, MULTI-WAY OPTION, PASSIVE DUAL TECHNOLOGY, DIMMING, VACANCY (DEFAULT) OR AUTO-ON

WIRING DEVICES

- Ⓢ** - DUPLEX RECEPTACLE, WALL MOUNTED
 - Ⓢ** - DUPLEX RECEPTACLE, WALL MOUNTED, EACH WITH TWO TYPE C USB CHARGING PORTS
 - Ⓢ** - DUPLEX RECEPTACLE, WALL MOUNTED ABOVE COUNTER
 - Ⓢ** - GFCI DUPLEX RECEPTACLE, WALL MOUNTED ABOVE COUNTER
 - ITVH** - LARGE FORMAT DISPLAY MONITOR OUTLET - HIGH HEIGHT PER ARCHITECTURAL ELEVATION PLANS, PROVIDE: (1) DUPLEX RECEPTACLE (2) DATA OUTLETS
 - P** - PROJECTOR OUTLET CEILING MOUNTED, PROVIDE: (1) DUPLEX RECEPTACLE (2) DATA OUTLETS
 - PS** - MOTORIZED PROJECTOR SCREEN POWER
 - Ⓢkp** - KEYED UP/DN SWITCH FOR PROJECTION SCREEN
 - FB** - FLOOR BOX: (1) DUPLEX RECEPTACLES,
- ABBREVIATIONS:**
- CP - COPIER
 - DF - DRINKING FOUNTAIN
 - RF - REFRIGERATOR, PROVIDE GFCI BREAKER IN ELECTRICAL PANEL
 - M - MICROWAVE
 - WP - WEATHER PROOF
 - WIC - WHILE IN-USE COVER

WIRING

- - HOME RUN TO PANEL
 - - HOME RUN TO PANEL
INSTALL 10 AWG WIRE TO ALL DEVICES IN THE CIRCUIT UNLESS OTHERWISE NOTED
- WIRE SIZES SHOWN ON WIRING RUNS ARE FOR THE ASSISTANCE TO THE ELECTRICIAN IN RUNNING THE WIRING. IT SHALL BE THE RESPONSIBILITY OF THE ELECTRICAL SUBCONTRACTOR TO VERIFY ALL WIRE SIZES AND INSTALL THE REQUIRED NUMBER OF CONDUCTORS NEEDED FOR THE INSTALLATION.

ACCESS CONTROL

- C** - DOOR CONTACT
- CR** - CARD READER
- EL** - ELECTRIC LOCK
- HC** - PUSH BUTTON FOR DOOR OPENER
- Rx** - REQUEST TO EXIT
- DO** - DOOR OPERATOR
- DC** - POWER SUPPLY FOR DOOR OPERATOR

EQUIPMENT

- Ⓢ** - ELECTRICAL PANEL, SURFACE MTD.
- S12** - SAFETY DISCONNECT SNAP SWITCH HORSE POWER RATED - 208V
- 30AS 20AF** - FUSED DISCONNECT SWITCH "30AS" - DENOTES 30A SWITCH "20AF" - DENOTES 20A FUSE
- H1** - JUNCTION BOX
- F** - POWER FOR ELECTRONIC FLUSH VALVE. COORDINATE LOCATION WITH THE APPROVED SHOP DRAWINGS.

TELECOMMUNICATIONS

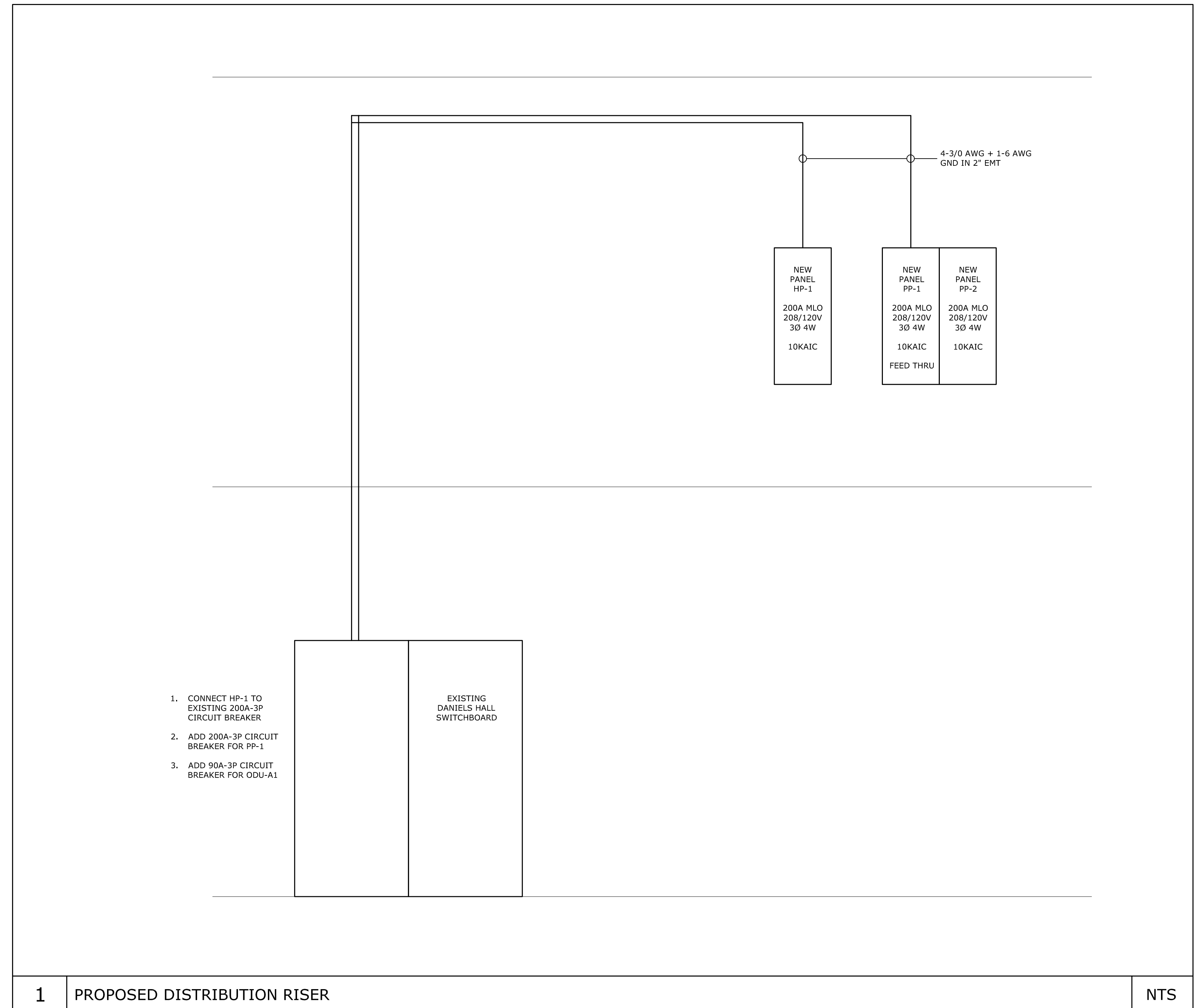
- ▽** - TWO DATA JACKS, WALL MOUNTED
- ▽** - TWO DATA JACKS, WALL MOUNTED, ABOVE COUNTER
- ▽** - WALL PHONE, (1) VOICE, WALL MOUNTED
- Ⓢ** - WIFI ACCESS POINT, CEILING MOUNTED

VIDEO SURVEILLANCE

- Ⓢ** - CAMERA

LIGHTING

- A** - LIGHT FIXTURE
"A" DENOTES FIXTURE TYPE
"B" DENOTES SWITCH CODE
"L-1" DENOTES PANEL AND CIRCUIT NUMBER
 - Ⓢ** - LIGHT FIXTURE ON LIFE SAFETY EMERGENCY CIRCUIT
 - Ⓢ** - EMERGENCY BATTERY UNIT
"EXP" DENOTES EXPLOSION PROOF
 - Ⓢ** - EXIT SIGN, SINGLE SIDED
 - Ⓢ** - EXIT SIGN, DUAL SIDED
 - Ⓢ** - EXIT SIGN, SINGLE SIDED, WALL MOUNTED
HC - DENOTES ACCESSIBLE EXIT SIGN
- NOTES FOR EGRESS LIGHTING:**
- CONNECT EXIT SIGNS TO THE LINE SIDE OF THE NEAREST EMERGENCY LIGHTING CIRCUIT IN THE AREA.
 - CONNECT EMERGENCY BATTERY UNITS (TYPE VE) TO THE LINE SIDE OF THE NEAREST NORMAL LIGHTING CIRCUIT IN THE AREA.
- ABBREVIATION:**
- "ETR" - DENOTES EXISTING DEVICE TO REMAIN.



1 PROPOSED DISTRIBUTION RISER

NTS

LAMOUREUX PAGANO ASSOCIATES|ARCHITECTS
 108 Grove Street, Suite 300
 Worcester MA 01605
 508.752.2831
 www.lpa.com

ARCHITECT'S STAMP

CONSULTANT

ART Engineering
 we build the future.
 38 Front Street, FL 3, Worcester, MA 01608
 www.artengineering.us

CONSULTANT'S STAMP



PROJECT

Project Status

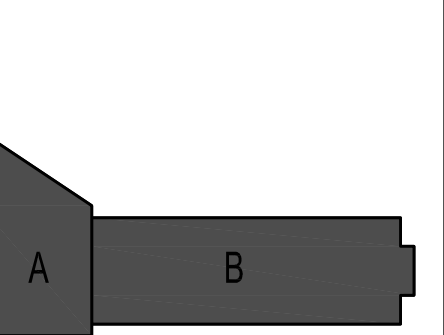
WPI CENTER FOR WELL-BEING

DANIELS HALL, INSTITUTE ROAD,
 WORCESTER MA 01609

DRAWING TITLE

Electrical Legend

Key Plan



Project / True North

REVISIONS

No.	Description	Date
1	ISSUED FOR PERMIT	6/17/2022
2	CA COORDINATION	9/12/2022

FILE: _____
 JOB NO: 202028
 SCALE: AS NOTED
 DWN. BY: TN
 CKD. BY: ASR
 DATE: 6-17-2022

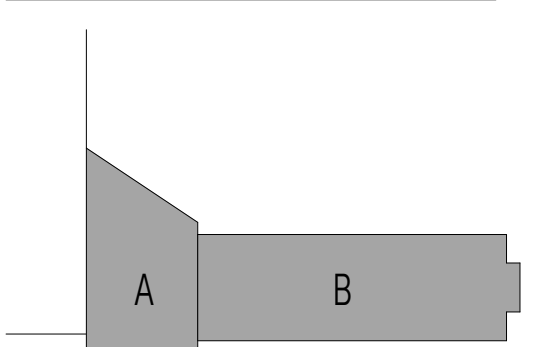
E-001



**WPI CENTER
FOR
WELL-BEING**

DANIELS HALL, INSTITUTE ROAD,
WORCESTER MA 01609

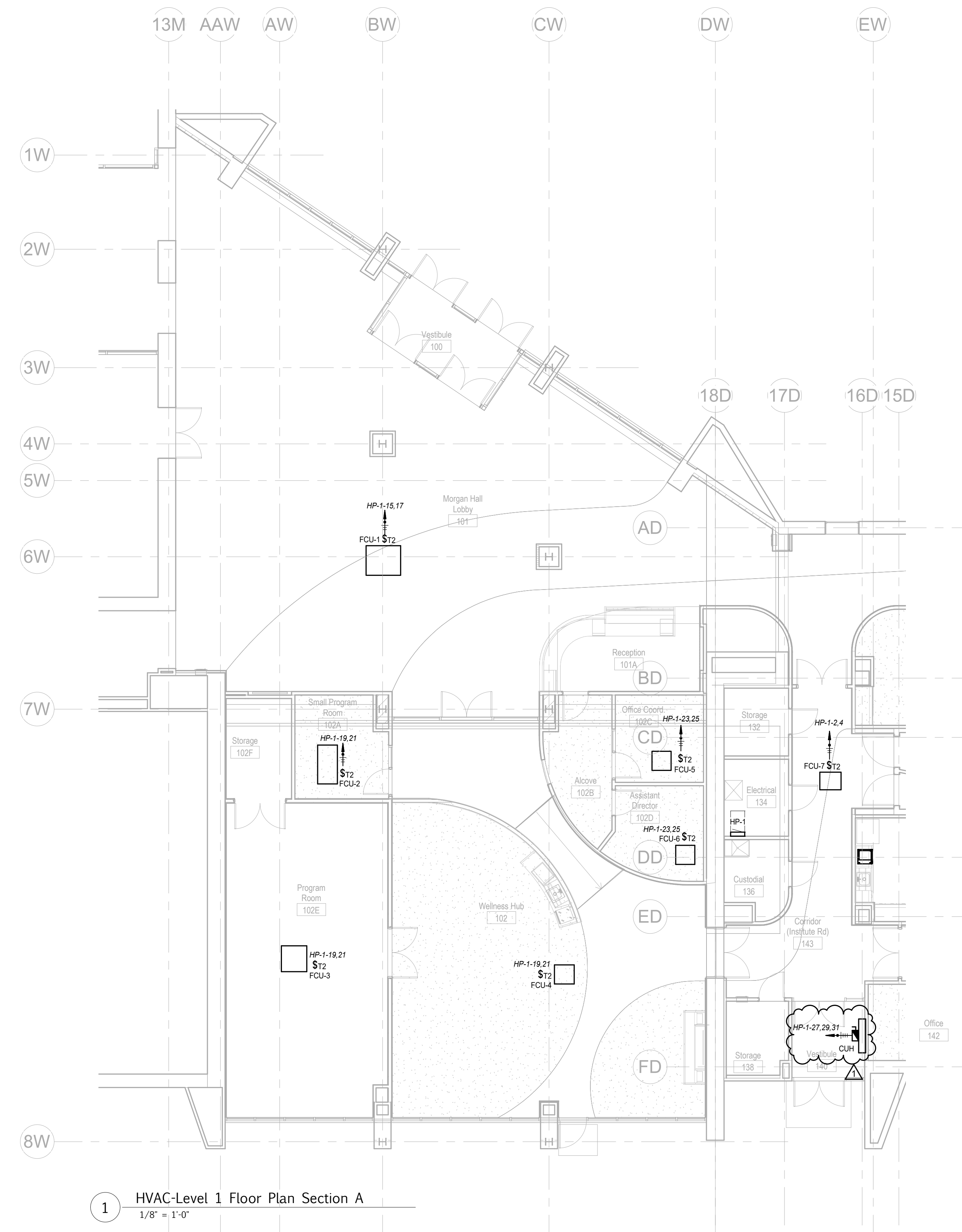
**HVAC - Level 1
Floor Plan
Section A**



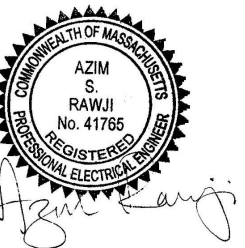
REVISIONS		
No	Description	Date
1	CA COORDINATION	08/18/2022

FILE:	
JOB NO:	202028
SCALE:	1/8" = 1'-0"
DWN. BY:	TN
CKD. BY:	ASR
DATE:	8-18-2022

EH-111



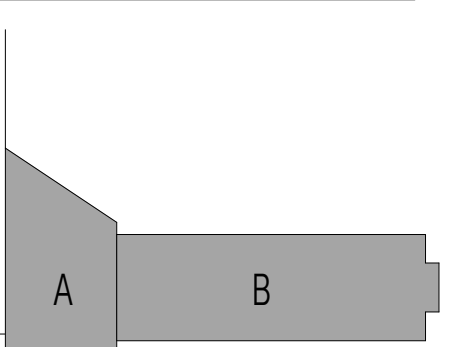
1 HVAC-Level 1 Floor Plan Section A
1/8" = 1'-0"



WPI CENTER
FOR
WELL-BEING

DANIELS HALL, INSTITUTE ROAD,
WORCESTER MA 01609

HVAC - Level 1
Floor Plan
Section B



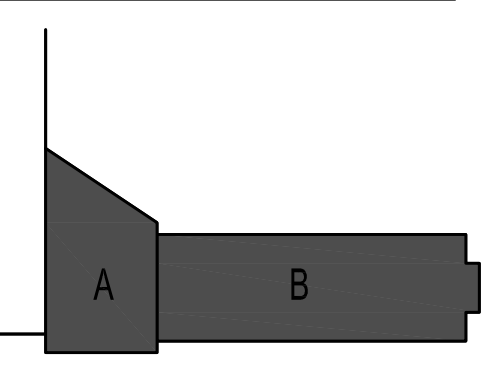
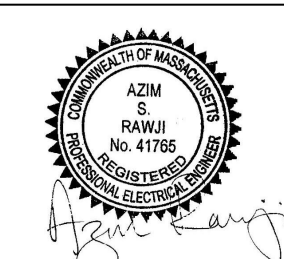
No	Description	Date
1	CA COORDINATION	08/18/2022
2	CA COORDINATION	09/07/2022

FILE:
JOB NO: 202028
SCALE: 1/8" = 1'-0"
DWN. BY: TN
CKD. BY: ASR
DATE: 8-18-2022

EH-112



1 HVAC-Level 1 Floor Plan Section B
1/8" = 1'-0"



No.	Description	Date
1	ISSUED FOR PERMIT	6/17/2022
2	CA COORDINATION	9/12/2022

FILE: _____

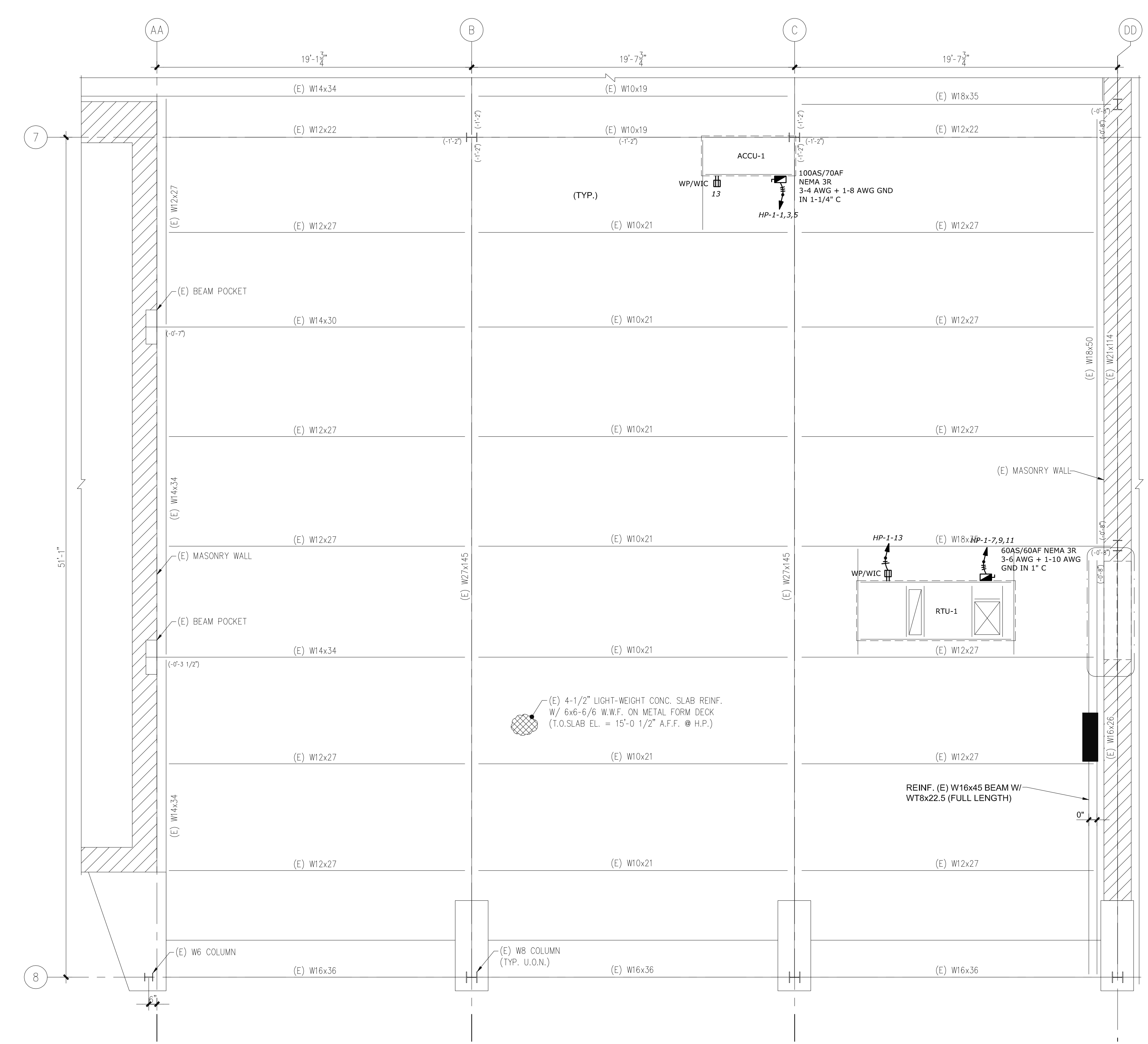
JOB NO: 202028

SCALE: AS NOTED

DWN. BY: TN

CKD. BY: ASR

DATE: 6-17-2022



ROOF POWER
1/4" = 1'-0"

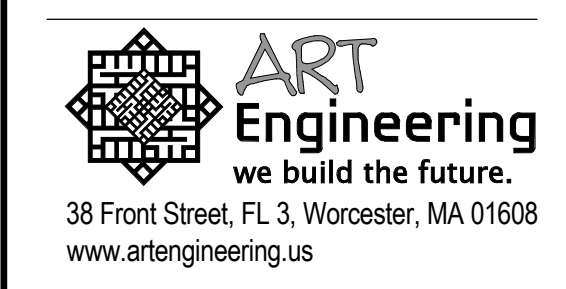
KEYED NOTE FOR EL-112
 ① PROVIDE POWER PACK AND SWITCH FOR LED STRIP LIGHTING. CONNECT LIGHT FIXTURE TO EXISTING LIGHTING CIRCUIT IN THE AREA. COORDINATE MOUNTING ELEVATION AND SWITCH LOCATION WITH THE ARCHITECT PRIOR TO INSTALLATION.



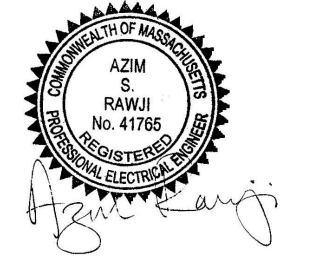
LAMOUREUX PAGANO
 ASSOCIATES|ARCHITECTS
 108 Grove Street, Suite 300
 Worcester MA 01605
 508.752.2831
 www.lpa.com

ARCHITECT'S STAMP

CONSULTANT



CONSULTANT'S STAMP



PROJECT



Project Status

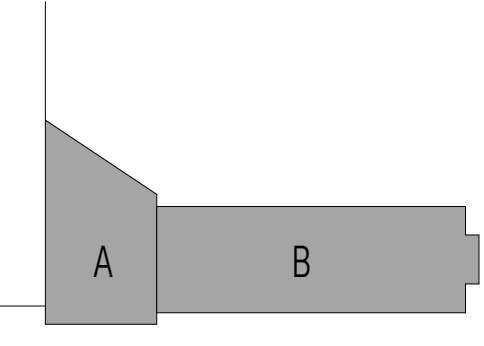
WPI CENTER
 FOR
 WELL-BEING

DANIELS HALL, INSTITUTE ROAD,
 WORCESTER MA 01609

DRAWING TITLE

Lighting - Level
 1 Floor Plan
 Section B

Key Plan

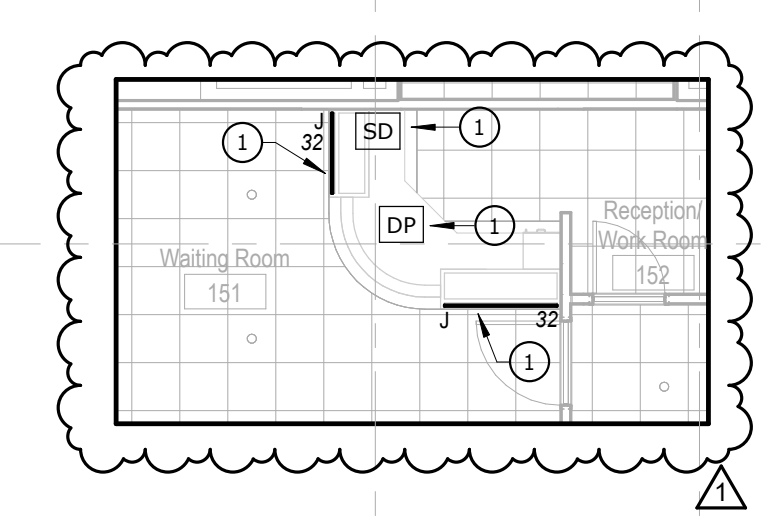
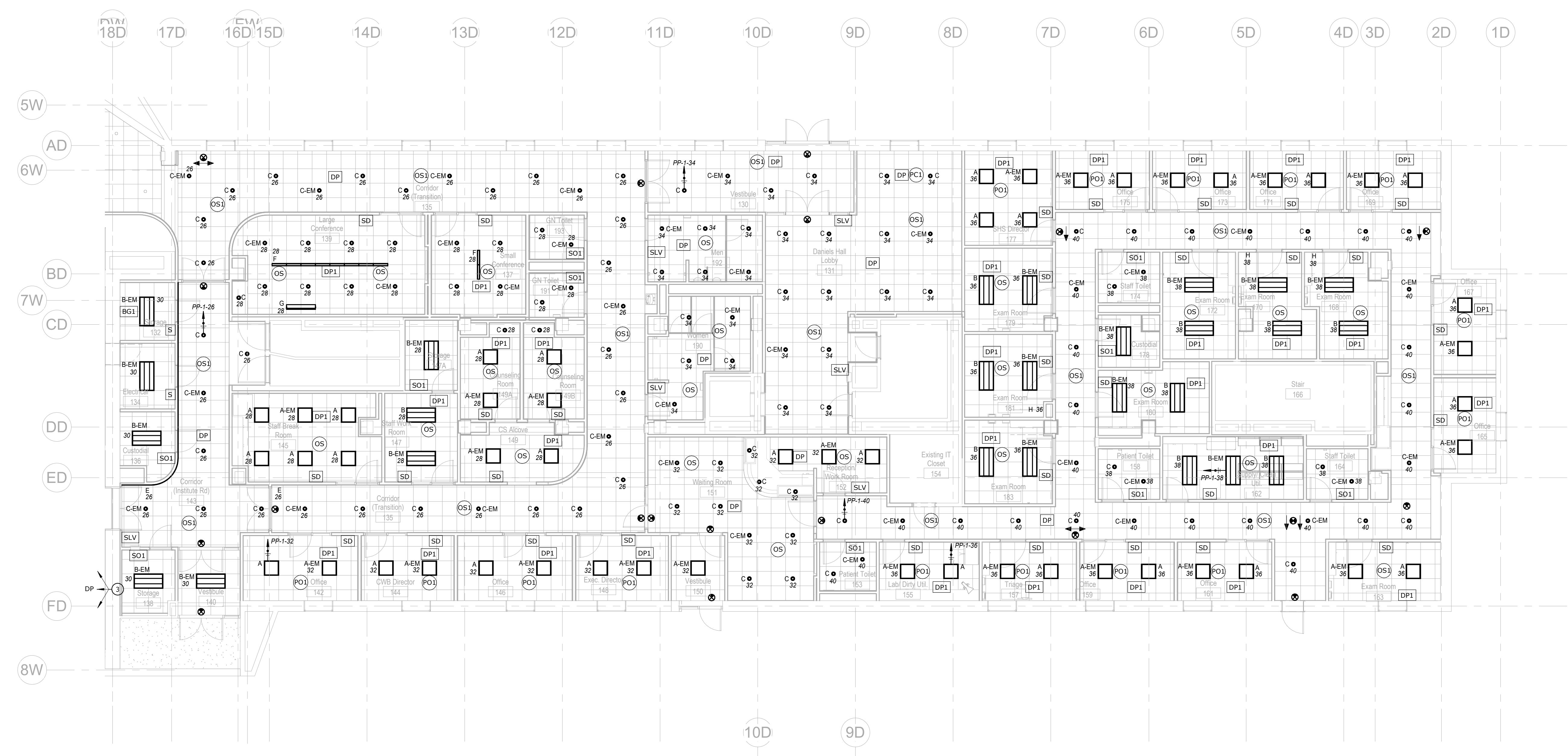


Project / True North

No	Description	Date
1	CA COORDINATION	09/07/2022

FILE:
 JOB NO: 202028
 SCALE: 1/8" = 1'-0"
 DWN. BY: TN
 CKD. BY: ASR
 DATE: 8-19-2022

EL-112



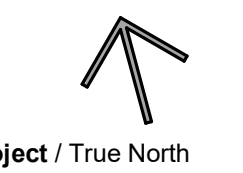
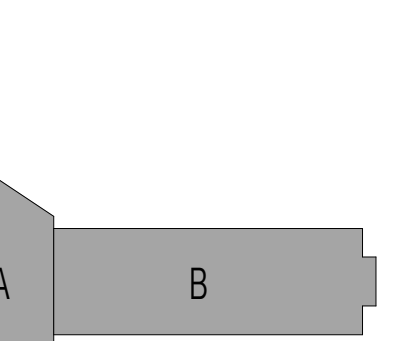
② Lighting - Waiting Room 151
 1/8" = 1'-0"



**WPI CENTER
FOR
WELL-BEING**

DANIELS HALL, INSTITUTE ROAD,
WORCESTER MA 01609

**Power &
Technology -
Level 1 Floor
Plan Section A**



No	Description	Date

FILE: _____

JOB NO: 202028

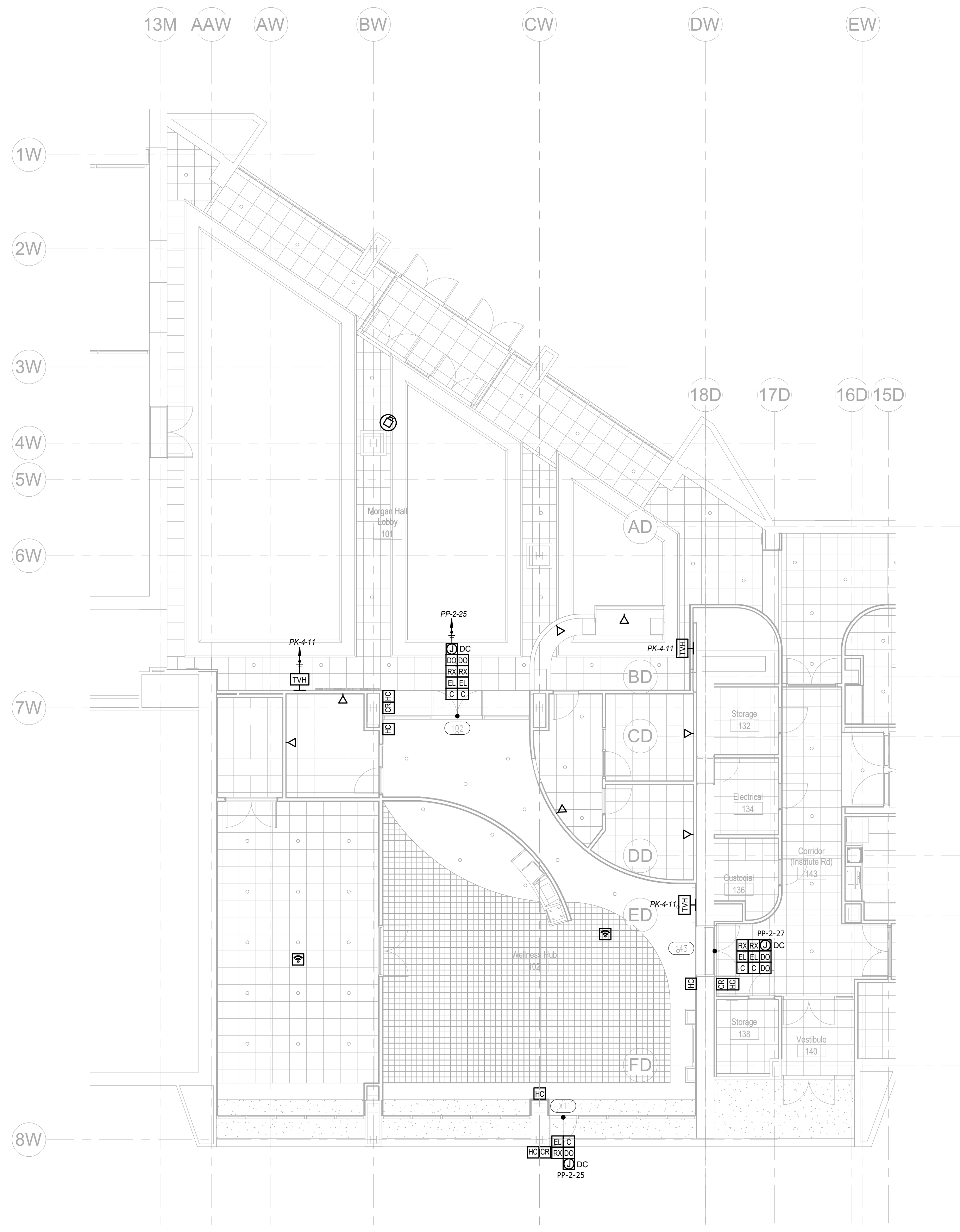
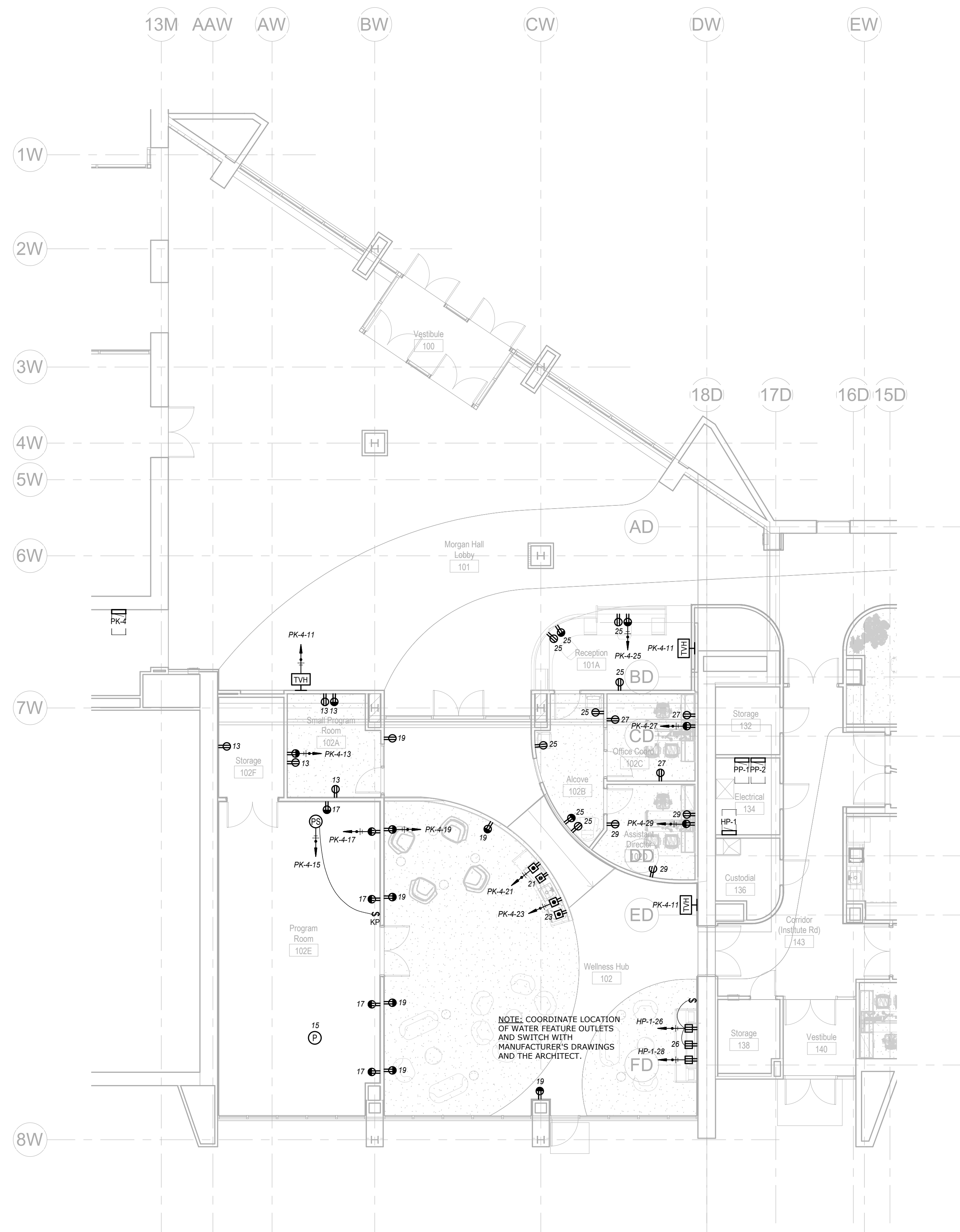
SCALE: 1/8" = 1'-0"

DWN. BY: TN

CKD. BY: ASR

DATE: 8-18-2022

EP-111



NOTE: COORDINATE LOCATION
OF WATER FEATURE OUTLETS
AND SWITCH WITH
MANUFACTURER'S DRAWINGS
AND THE ARCHITECT.

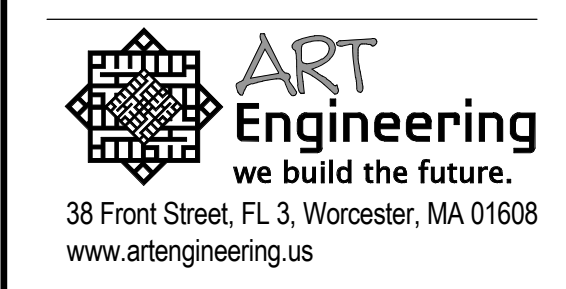
KEYED NOTE FOR EP-112
 1 RUN A CARD ACCESS CABLE TO THE AED CABINET.



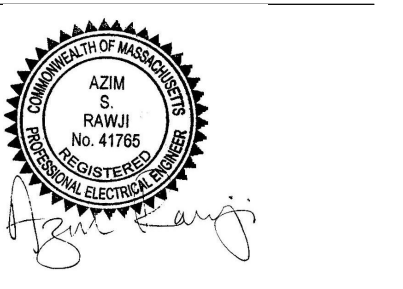
LAMOUREUX PAGANO
 ASSOCIATES|ARCHITECTS
 108 Grove Street, Suite 300
 Worcester, MA 01605
 508.752.2831
 www.lpa.com

ARCHITECT'S STAMP

CONSULTANT



CONSULTANT'S STAMP



PROJECT



Project Status

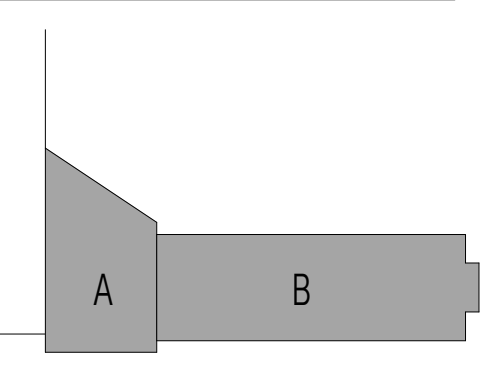
WPI CENTER
 FOR
 WELL-BEING

DANIELS HALL, INSTITUTE ROAD,
 WORCESTER, MA 01609

DRAWING TITLE

Power &
 Technology -
 Level 1 Floor
 Plan Section B

Key Plan

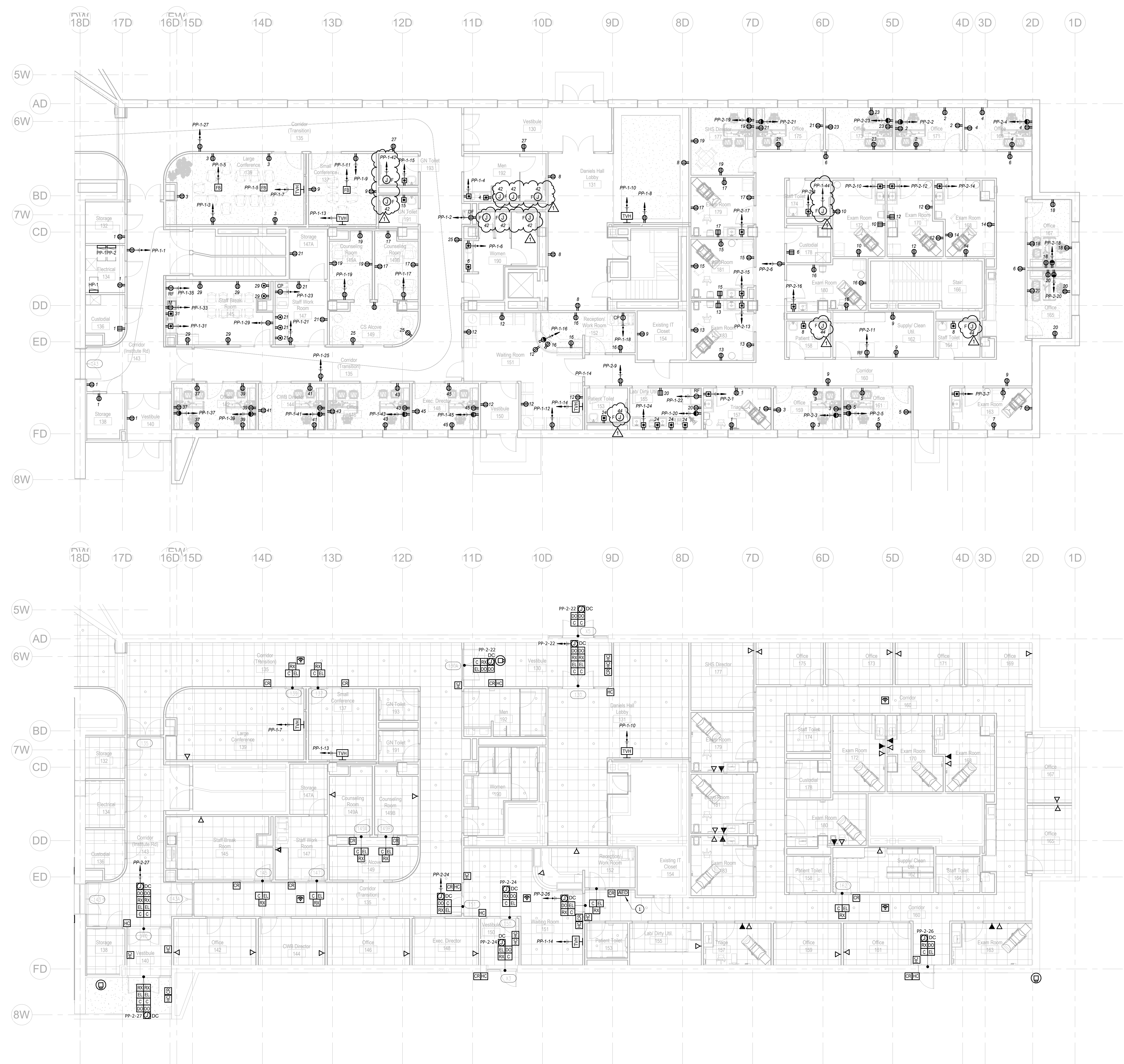


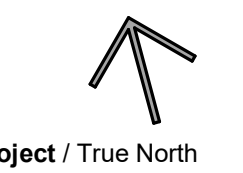
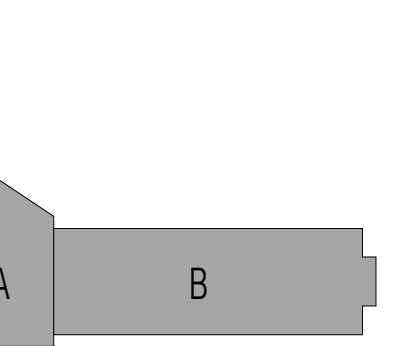
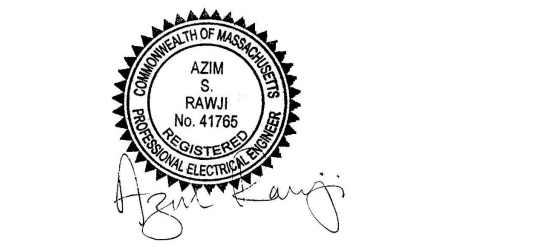
Project / True North

No	Description	Date
1	CA COORDINATION	09/12/2022

FILE:	
JOB NO:	202028
SCALE:	1/8" = 1'-0"
DWN. BY:	TN
CKD. BY:	ASR
DATE:	8-18-2022

EP-112





No	Description	Date
1	CA COORDINATION	08/18/2022
2	CA COORDINATION	09/07/2022
3	CA COORDINATION	09/12/2022

FILE:
JOB NO: 202028
SCALE:
DWN. BY: TN
CKD. BY: AR
DATE: 8-18-2022

Panel: HP-1
Location: Electrical 134
Mounting: Surface
Fed From: Existing Daniels Hall Switchboard

New Panel
Volts: 120/208 3PH
Phases: 3
Wires: 4

Mains Rating: 200 A

Notes: PROVIDE GFCI CIRCUIT BREAKERS WHERE NOTED.

CKT	Circuit Description	Trip	Poles	A	B	C	Poles	Trip	Circuit Description	CKT
1										
3	ACCU-1	90 A	3	7.97	0.24				20 A FCU-7	2
5					7.97	0.24			20 A FCU-8, FCU-9, FCU-10	4
7						7.97	0.57		20 A FCU-11, FCU-12, FCU-14	6
9	RTU-1	90 A	3	2.63	0.57				20 A FCU-13, FCU-16, FCU-17	8
11					2.63	0.53			20 A FCU-15, FCU-18, FCU-20	10
13	ROOF TOP RECEPTACLE	20 A	1	0	0.49				20 A WATER FOUNTAIN-WELLNESS HUB 102	12
15					0.84	0.49			20 A WATER FOUNTAIN-WELLNESS HUB 102	14
17	FCU-1	20 A	2			0.64	0.44		20 A CUH VESTIBULE 130	16
19	FCU-2, FCU-3, FCU-4	20 A	2	0.52	0.44				20 A CUH VESTIBULE 130	18
21					0.52	0.64			20 A Spare	20
23	FCU-5, FCU-6	20 A	1	0.52	0.46				20 A Spare	22
25					1.32	0.18			20 A Spare	24
27	CUH VESTIBULE 140/150	20 A	3			1.32	0.68		20 A Spare	26
29	CUH OFFICE 146 / DIRECTOR 146 EXAM 146	20 A	1			0.16	0.66		20 A Spare	28
31						0	0		20 A Spare	30
33	Spare	20 A	2	0	0				20 A Spare	32
35	Spare	20 A	1			0	0		20 A Spare	34
37	Spare	20 A	1			0	0		20 A Spare	36
39	Spare	20 A	1			0	0		20 A Spare	38
41	Spare	20 A	1			0	0		20 A Spare	40
43						0	0		20 A Spare	42

Panel: PK-4
Location: Electrical 134
Mounting: Surface
Fed From: Existing Daniels Hall Switchboard

Existing Panel
Volts: 120/208 3PH
Phases: 3
Wires: 4

Mains Rating: 175 A

Notes: PROVIDE GFCI CIRCUIT BREAKERS WHERE NOTED.

CKT	Circuit Description	Trip	Poles	A	B	C	Poles	Trip	Circuit Description	CKT
1	(EX) FOOD SERVICE OFFICE LIGHTS	20 A	1	0	0				(EX) FOOD SERVICE OFFICE OUTLETS	2
3					0	0			(EX) SALLY SALAD VEND	4
5	(EX) FOOD SERVICE HVAC UNIT	20 A	3			0	0		(EX)	6
7					0	0			(EX)	8
9	(EX) GFCI OUTLET IN KITCHEN FOR FAN	20 A	1			0	0		(EX)	10
11	TVHL & TVH - 101 / 101A / 102	20 A	1	0.58	0.46				(EX)	12
13	RECEPTACLE - 102A / 102F	20 A	1	1.08	0				(EX)	14
15	PROJECTOR - PROGRAM ROOM 102E	20 A	1			0.96			(EX) FOOD SERVICE OFFICE OUTLETS	16
17	RECEPTACLE - PROGRAM ROOM 102E	20 A	1			0.9	0.94		(EX)	18
19	RECEPTACLE - WELLNESS HUB 102	20 A	1	1.26	0.49				LIGHTING	20
21	GFCI RECEPTACLE - WELLNESS HUB 102	20 A	1			0.36			(EX) TEMP RECEPTACLE	22
23	GFCI RECEPTACLE - WELLNESS HUB 102	20 A	1			0.36	0		(EX) OUTLET ABOVE CASHIER, CEILING	24
25	RECEPTACLE - 101A / 102B	20 A	1	1.62	0				Space	26
27	RECEPTACLE - 102C	20 A	1			0.72	--		(EX)	28
29	RECEPTACLE - 102D	20 A	1			0.72	0		(EX)	30
31					0	0			(EX)	32
33	(EX) VESTIBULE HEATER IN WEDGE ENTRANCE	20 A	3			0	0		(EX)	34
35						0	0		(EX)	36
37	(EX)	20 A	1	0	0				(EX) VESTIBULE HEATER IN WEDGE ENTRANCE	38
39	(EX)	20 A	1			0	0		(EX)	40
41	(EX)	20 A	1			0	0		(EX)	42

Panel: PP-1
Location: Electrical 134
Mounting: Surface
Fed From: Existing Daniels Hall Switchboard

New Panel
Volts: 120/208 3PH
Phases: 3
Wires: 4

Mains Rating: 200 A

Notes: PROVIDE GFCI CIRCUIT BREAKERS WHERE NOTED.

CKT	Circuit Description	Trip	Poles	A	B	C	Poles	Trip	Circuit Description	CKT
1	RECEPTACLE - CORRIDOR 143	20 A	1	1.26	0.48				20 A DRINKING FOUNTAIN - CORRIDOR 135	2
3	RECEPTACLE - LARGE CONF 139	20 A	1		0.90	0.36			20 A GFCI RECEPTACLE - MEN 192	4
5	RECEPTACLE - LARGE CONF 139	20 A	1			0.72	0.36		20 A GFCI RECEPTACLE - WOMEN 190	6
7	TVH - LARGE CONF 139	20 A	1	0.54	0.90				20 A RECEPTACLE - DANIELS HALL LOBBY 131	8
9	RECEPTACLE - SMALL CONF 137	20 A	1		0.54	0.54			20 A TVH - DANIELS HALL LOBBY 131	10
11	RECEPTACLE - SMALL CONF 137	20 A	1			0.36	1.26		20 A RECEPTACLE - WAITING ROOM 151	12
13	TVH - SMALL CONF 137	20 A	1	0.54	0.54				20 A TVH - WAITING ROOM 151	14
15	GFCI RECEPTACLE - GN TOILET 191/193	20 A	1		0.36	0.90			20 A RECEPTACLE - RECEPTIONWORK ROOM 152	16
17	RECEPTACLE - COUNSELING ROOM 149B	20 A	1			0.72	0.48		20 A COPIER - RECEPTIONWORK ROOM 152	18
19	RECEPTACLE - COUNSELING ROOM 149A	20 A	1	0.72	0.54				20 A RECEPTACLE - LAB/DIRTY UTIL. 155	20
21	RECEPTACLE - STAFF WORK ROOM 147	20 A	1		1.26	0.48			20 A REFRIGERATOR - LAB/DIRTY UTIL. 155	22
23	COPIER - STAFF WORK ROOM 147	20 A	1			0.48	0.90		20 A GFCI RECEPTACLE - LAB/DIRTY UTIL. 155	24
25	RECEPTACLE - CORRIDOR 135	20 A	1	0.90	0.75				20 A LIGHTING	26
27	RECEPTACLE - CORRIDOR 135	20 A	1		0.54	0.73			20 A LIGHTING	28
29	RECEPTACLE - STAFF BREAK ROOM 113	20 A	1			0.36	0.48		20 A LIGHTING	30
31	GFCI RECEPTACLE - STAFF BREAK ROOM 145	20 A	1	0.36	0.48				20 A LIGHTING	32
33	MICROWAVE - STAFF BREAK ROOM 145	20 A	1		0.48	0.54			20 A LIGHTING	34
35	REFRIGERATOR - STAFF BREAK ROOM 145	20 A	1			0.48	0.67		20 A LIGHTING	36
37	RECEPTACLE - GRADUATE STUDENT OFFICE 142	20 A	1	0.72	0.59				20 A LIGHTING	38
39	RECEPTACLE - GRADUATE STUDENT OFFICE 142	20 A	1		0.72	0.59			20 A LIGHTING	40
41	RECEPTACLE - CWB DIRECTOR 144	20 A	1			0.90	0.40		20 A POWER FOR ELECTRONIC FLUSH VALVES	42
43	RECEPTACLE - OFFICE 146	20 A	1	0.90	0.20				20 A POWER FOR ELECTRONIC FLUSH VALVES	44
45	RECEPTACLE - EXEC DIRECTOR 148	20 A	1		0.90	0.00			20 A Spare	46
47	Spare	20 A	1			0.00	0.00		20 A Spare	48
49	Spare	20 A	1	0.00	0.00				20 A Spare	50
51	Spare	20 A	1			0.00	0.00		20 A Spare	52
53	Spare	20 A	1			0.00	0.00		20 A Spare	54

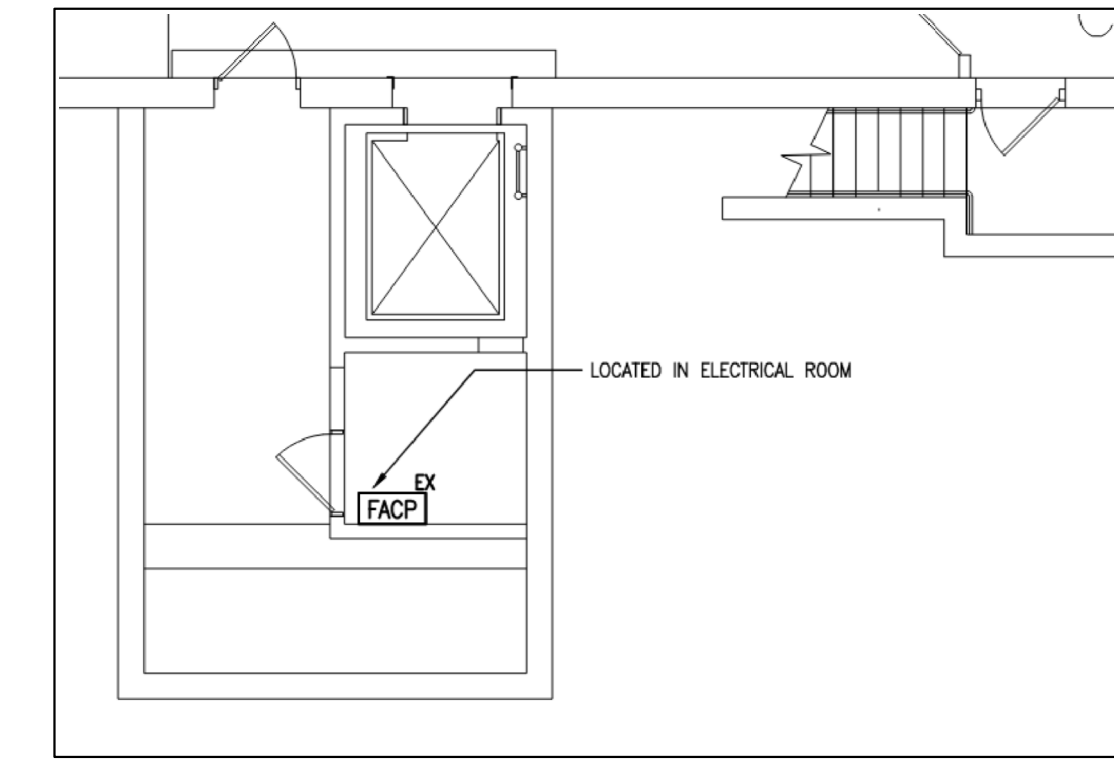
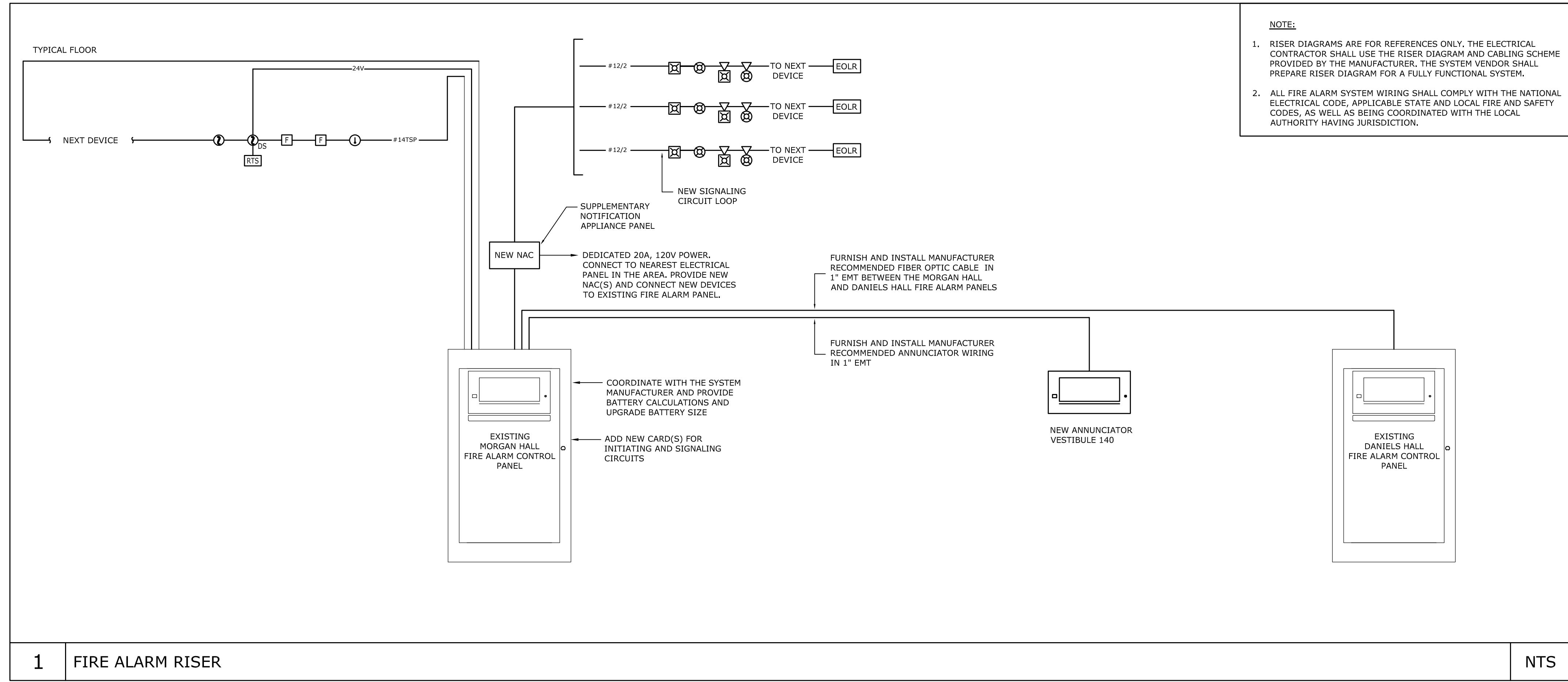
Panel: PP-2
Location: Electrical 134
Mounting: Surface
Fed From: Existing Daniels Hall Switchboard

New Panel
Volts: 120/208 3PH
Phases: 3
Wires: 4

Mains Rating: 200 A

Notes: PROVIDE GFCI CIRCUIT BREAKERS WHERE NOTED.

CKT	Circuit Description	Trip	Poles	A	B	C	Poles	Trip	Circuit Description	CKT
1	RECEPTACLE - TRIAGE 157	20 A	1	0.72	0.90				20 A RECEPTACLE - OFFICE 171	2
3	RECEPTACLE - OFFICE 159	20 A	1		0.90	0.90			20 A RECEPTACLE - OFFICE 169	4
5	RECEPTACLE - OFFICE 161	20 A	1			0.90	0.90		20 A RECEPTACLE - CORRIDOR 160	6
7	RECEPTACLE - EXAM ROOM 163	20 A	1	0.72	0.54				20 A RECEPTACLE - STAFF TOILET 158/164/174	8
9	RECEPTACLE - CORRIDOR	20 A	1		1.08	0.72			20 A RECEPTACLE - EXAM ROOM 172	10
11	REFRIGERATOR - MED SUPPLY / CLEAN UTIL. 162	20 A	1			0.48	0.90		20 A RECEPTACLE - EXAM ROOM 170	12
13	RECEPTACLE - EXAM ROOM 183	20 A	1	0.90	0.72				20 A RECEPTACLE - EXAM ROOM 168	14
15	RECEPTACLE - EXAM ROOM 181	20 A	1		0.90	0.72			20 A RECEPTACLE - EXAM ROOM 180	16
17	RECEPTACLE - EXAM ROOM 179	20 A	1			0.90	0.90		20 A RECEPTACLE - OFFICE 167	18
19	RECEPTACLE - SHS DIRECTOR 177	20 A	1	0.72	0.90				20 A RECEPTACLE - OFFICE 165	20
21	RECEPTACLE - OFFICE 175	20 A	1		0.72	0.54			20 A DOOR CONTROL - VESTIBULE 130	22
23	RECEPTACLE - OFFICE 173	20 A	1			0.90	0.54		20 A DOOR CONTROL - WAITING ROOM 151	24
25	DOOR CONTROL - WELLNESS HUB 102	20 A	1	0.36	0.36				20 A DOOR CONTROL - CORRIDOR 160	26
27	DOOR CONTROL - CORRIDOR 143 / VESTIBULE 140	20 A	1		0.54	0.00			20 A Spare	28
29	Spare	20 A	1			0.00	0.00		20 A Spare	30
31	Spare	20 A	1	0.00	0.00				20 A Spare	32
33	Spare	20 A	1		0.00	0.00			20 A Spare	34
35	Spare	20 A	1			0.00	0.00		20 A Spare	36
37	Spare	20 A	1	0.00	0.00				20 A Spare	38
39	Spare	20 A	1		0.00	0.00			20 A Spare	40
41	Spare	20 A	1			0.00	0.00		20 A Spare	42
43	Spare	20 A	1	0.00	0.00				20 A Spare	44
45	Spare	20 A	1		0.00	0.00			20 A Spare	46
47	Spare	20 A	1			0.00	0.00		20 A Spare	48
49	Spare	20 A	1	0.00	0.00				20 A Spare	50
51	Spare	20 A	1		0.00	0.00			20 A Spare	52
53	Spare	20 A	1			0.00	0.00		20 A Spare	54



FIRE ALARM

①	- SMOKE DETECTOR
① _{ER}	- SMOKE DETECTOR, ELEVATOR RECALL
① _{DS}	- DUCT SMOKE DETECTOR WITH TWO RELAYS
① _T	- HEAT DETECTOR, FIXED '135' - DENOTES TEMPERATURE
②	- FLOW SWITCH
③	- TAMPER SWITCH
④	- PRESSURE SWITCH
⑤	- ALARM BELL
⑥	- EXTERIOR BEACON 150,000 CANDLE POWER. COORDINATE EXACT LOCATION WITH AHJ
RAI	- REMOTE ALARM INDICATOR, PROVIDE PERMANENTLY ATTACHED PLACARD TO INDICATE BOTH THE FUNCTION AND ANY DEVICE OR EQUIPMENT ASSOCIATED PER NFPA REQUIREMENTS. INDICATORS SHOULD BE WALL MOUNTED TO MAKE ATTACHING PLACARD AT THE INDICATOR EASIER. SUBMIT THE PLACARD TO ARCHITECT FOR APPROVAL PRIOR TO INSTALLATION
110cd	- VISUAL APPLIANCE, CEILING MOUNTED "110cd" - DENOTES CANDELA RATING
110cd	- COMBINATION AUDIOVISUAL APPLIANCE, CEILING MOUNTED "110cd" - DENOTES CANDELA RATING
110cd	- VISUAL APPLIANCE, WALL MOUNTED "110cd" - DENOTES CANDELA RATING
110cd	- COMBINATION AUDIOVISUAL APPLIANCE, WALL MOUNTED "110cd" - DENOTES CANDELA RATING
⑧	- FIRE ALARM SPEAKER, CEILING MOUNTED
⑨	- KNOX BOX
⑩	- INPUT/OUTPUT MODULE. PROVIDE CONTROL AND MONITOR MODULES AS REQUIRED TO ACHIEVE SPECIFIED CONTROL AND MONITORING FUNCTIONS.
⑪	- MONITOR MODULE
⑫	- CONTROL MODULE
⑬	- FIRE ALARM RELAY
⑭	- PULL STATION
⑮	- DOOR HOLDER
⑯	- MASTER BOX
⑰	- END-OF-LINE RESISTOR
⑱	- REMOTE TEST SWITCH
⑲	- SUPPLEMENTARY NOTIFICATION APPLIANCE PANEL
⑳	- FIRE ALARM CONTROL PANEL

ABBREVIATION:
"ETR" - DENOTES EXISTING DEVICE TO REMAIN.

LAMOUREUX PAGANO
ASSOCIATES|ARCHITECTS
108 Grove Street, Suite 300
Worcester MA 01605
508.752.2831
www.lpaa.com

ARCHITECT'S STAMP

CONSULTANT

ART Engineering
we build the future.
38 Front Street, Fl. 3, Worcester, MA 01608
www.artengineering.us

CONSULTANT'S STAMP



PROJECT

Project Status

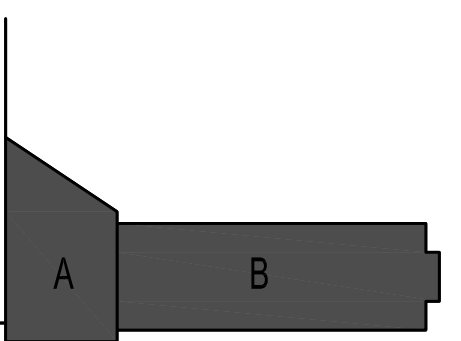
**WPI CENTER
FOR
WELL-BEING**

DANIELS HALL, INSTITUTE ROAD,
WORCESTER MA 01609

DRAWING TITLE

**Fire Alarm
Legend**

Key Plan



Project / True North

REVISIONS

No.	Description	Date
1	ISSUED FOR PERMIT	6/17/2022
2	CA COORDINATION	9/12/2022

FILE:
JOB NO: 202028
SCALE: AS NOTED
DWN. BY: TN
KCD. BY: ASR
DATE: 6-17-2022

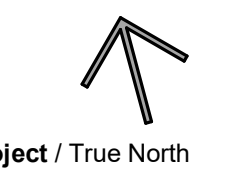
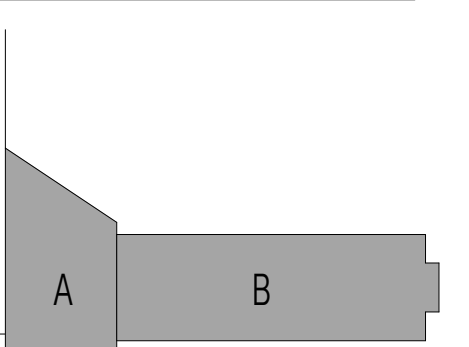
FA-001



**WPI CENTER
FOR
WELL-BEING**

DANIELS HALL, INSTITUTE ROAD,
WORCESTER MA 01609

**Fire Alarm -
Level 1 Floor
Plan Section A**



No	Description	Date

FILE:

JOB NO: 202028

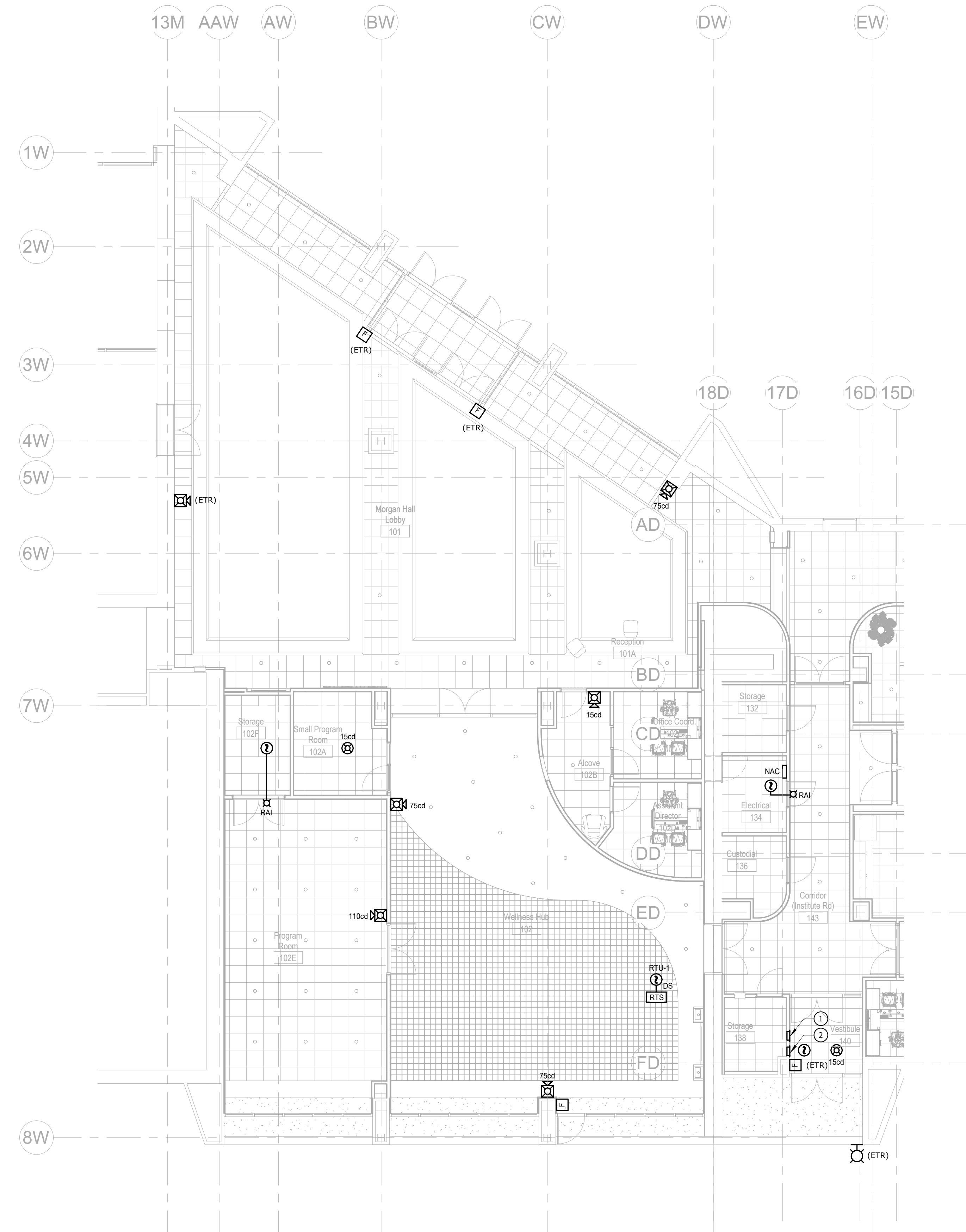
SCALE: 1/8" = 1'-0"

DWN. BY: TN

CKD. BY: ASR

DATE: 8-18-2022

FA-111



- KEYED NOTES FOR FA-112
- 1 NEW FIRE ALARM ANNUNCIATOR OFF OF THE CONTROL PANEL IN MORGAN HALL.
 - 2 EXISTING DANIELS FIRE ALARM ANNUNCIATOR TO REMAIN.
 - 3 FIRE ALARM BELL, MOUNTED AT 8'-10" ABOVE THE GROUND AND ABOVE THE FDC. CONNECT TO THE FIRE ALARM SYSTEM.

LPA|A
 LAMOUREUX PAGANO
 ASSOCIATES|ARCHITECTS
 108 Grove Street, Suite 300
 Worcester MA 01605
 508.752.2831
 www.lpaa.com

ARCHITECT'S STAMP

CONSULTANT
ART Engineering
 we build the future.
 38 Front Street, FL 3, Worcester, MA 01608
 www.artengineering.us

CONSULTANT'S STAMP

PROJECT



Project Status

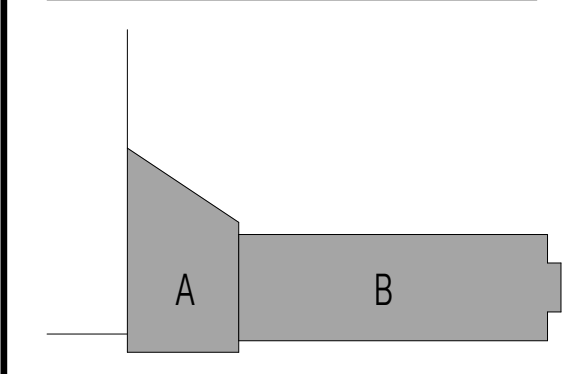
WPI CENTER FOR WELL-BEING

DANIELS HALL, INSTITUTE ROAD, WORCESTER MA 01609

DRAWING TITLE

Fire Alarm - Level 1 Floor Plan Section B

Key Plan



Project / True North

REVISIONS

No	Description	Date
1	CA COORDINATION	08/18/2022

FILE:
 JOB NO: 202028
 SCALE: 1/8" = 1'-0"
 DWN. BY: TN
 CKD. BY: ASR
 DATE: 8-18-2022

FA-112

